

SURGE PROTECTOR MOUNTING PLATE

TP-ESP-1000-POE • TP-ESP-1000-POE24 • TP-ESP-100-POE24

Installation of the Tycon™ lightning arrester has been made easy with this user's application, using a home-made mounting plate and good grounding.

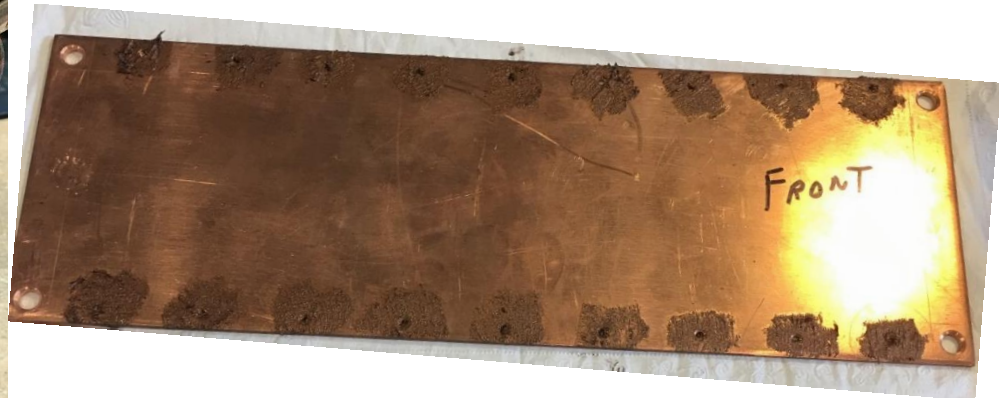
TIP Install lightning arrestors as close to the building entrance as possible to provide the quickest path to ground for the big spark.*



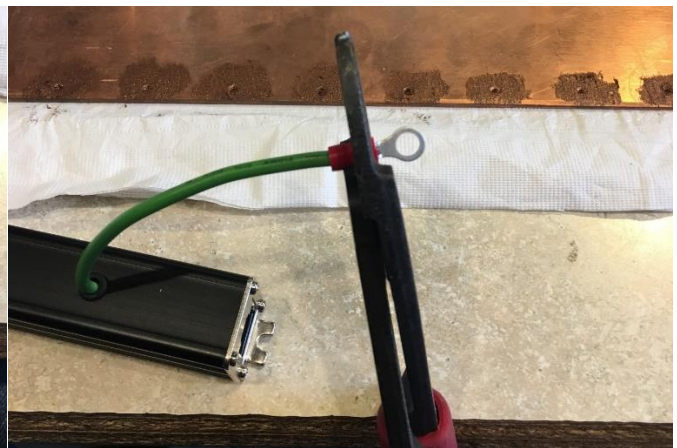
1. Choose your plate size.
In this example we use a 4"x12"x1/8" copper plate.
2. Layout holes, then drill and tap for #6-32 x 3/8 stainless screws.



3. To help keep away oxidation, use a little dab of Copper-Graphite Anti-Seize Lubricant at each screw location.



4. Get out your Tycon™ Surge Protector (TP-ESP-1000-POE)
5. Trim the ground wire and crimp on a ring terminal



6. Mount the arrestors across the plate using the #6-32 stainless hardware. Wipe off any excess *Never Seize* before continuing to the next step.



7. If you are using multiple surge protectors, you should continue placing each surge protector. Below is an example of an application with multiple surge protectors.



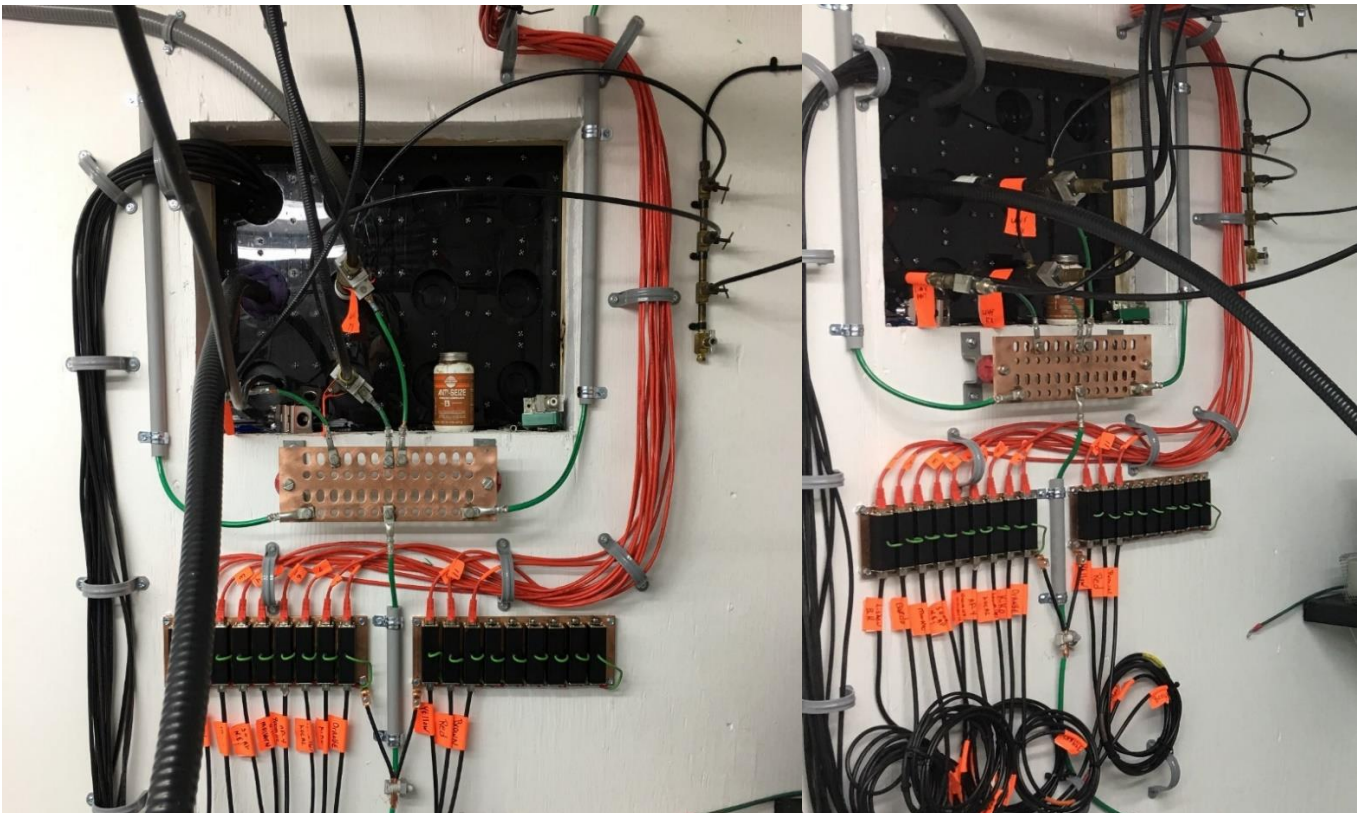
Front View

Rear View

8. The 3/8" screws come through the copper slightly. I mount the plate on standoffs so it doesn't cause any issues.



9. Mounted to the shelter wall and bonded to the entrance port ground.



For further support, contact sales@tyconsystems.com